

Product datasheet

GFP TAG MOUSE MONOCLONAL ANTIBODY (GF28R)

SKU: MM-0171-P

100 µg

OVERVIEW

Clonality:

Monoclonal

Host:

Mouse

Application:

ELISA, Dot, IP, IHC, WB

Target:

GFP Tag

Target background:

Epitope tags have application in the labeling, isolation and detection of proteins using immunoblotting, Immunoprecipitation and immunostaining techniques. The green fluorescent protein (GFP) from the jellyfish *Aequorea Victoria* is involved in the bioluminescence of the jellyfish. When expressed in prokaryotic cells, GFP produces a fluorescent product, making GFP useful in monitoring physiological processes, visualizing protein localization, and detecting transgenic expression.

Immunogen:

GFP from the jellyfish *Aequorea victoria* N-terminal peptide-KLH conjugates.

Specificity:

The antibody recognizes native and denatured forms of GFP and its variants such as: EGFP, YFP, EYFP, and CFP.

Clone ID:

GF28R

Isotype:

IgG2b

Preservative:

None

Format:

Lyophilized protein G purified in PBS pH7.4

Recommend starting dilution:

If reconstituted with deionized water in 100 µl: WB 1:1000-3,000, IHC 1:500-2,000.
Optimal dilution has to be determined by the user.

Limitations:

Research Use Only

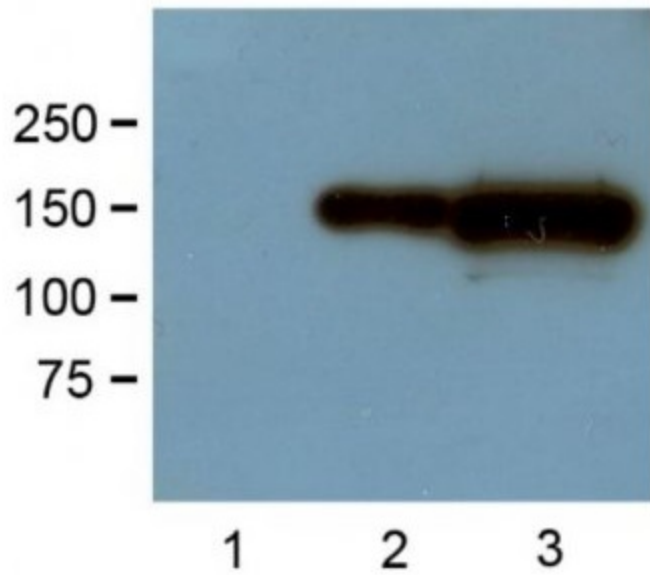
References:

1.-Dhillon SS - Variants in nicotinamide adenine dinucleotide phosphate oxidase complex components determine susceptibility to very early onset inflammatory bowel ...

Storage:

Lyophilized antibodies can be kept at 4°C for up to 3 months and should be kept at -20°C for long-term storage (2 years). To avoid freeze-thaw cycles, reconstituted antibodies should be aliquoted before freezing for long-term (1 year) storage (-80°C) or kept at 4°C for short-term usage (2 months). For maximum recovery of product, centrifuge the original vial prior to removing the cap. Further dilutions can be made with the assay buffer. After the maximum long-term storage period (2 years lyophilized or 1 year reconstituted) antibodies should be tested in your assay with a standard sample to verify if you have noticed any decrease in their efficacy.

Image:



Western blot analysis of HEK293 cells transfected with GFP-tagged protein vector. 1:1000 (1 µg/mL) Ab dilution. Non-transfected (1), 1 µg (2) and 10 µg (3) of cell lysate used.

